



MTi15 Thermal Imager

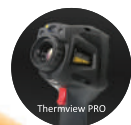
For clear and accurate thermal analysis of electrical panels, motors, compressor lines and HVAC applications, the Wi-Fi enabled MTi15 Thermal Imager allows the user to transfer images and stream live video to PC or a smart device. With a 160 x 120 pix resolution at 50Hz, touch screen and manual focus, this lightweight thermal imager offers real-time detection of thermal issues effectively and is ideal for plant and maintenance electricians as well as HVAC installers. The unit has a temperature range from -20°C to 650°C, 16X digital zoom, picture-in-picture, thermal fusion, 3 Hot/Cold spot marker, 3 Area and 2 line analysis options that are available on the 3.5" touch screen from which data can be easily transferred.

Features

- 160 x 120 Pixel Thermal Detector
- 19,200 points real temperature
- 50Hz Image Frequency
- 3 Area and 2 Line Analysis
- 3 Manual Spots
- Hot, Cold and Centre Spot Temperature
- 3.5" TFT LCD display, Touch Screen
- Instant share & save via WiFi to PC, iOS and Android smart devices
- Colour Pallets include Iron, Rainbow, Grey, Grey Inverted, Brown, Blue/Red, Feather, Zone Alarm
- Rugged and industrial design casing
- Easy to use functions via touch screen



Function	Range
Imaging and Optical Data	
Field Of View	20.7° x 15.6°
Spatial Resolution	1.88mrad
Thermal Sensitivity	<0.05° at 30°C (86°F)/50mK
Image Frequency	50Hz
Focus Mode Manual	
Focus Mode	Manual Focus
Focal Length	7.5mm
Focal Plane Array (FPA)/Spectral Range	Uncooled Microbolometer/8-14µm
IR Resolution	160 x 120 pixels
Image Presentation	
Display	3.5" TFT LCD, Touch Screen
Display Resolution	640 x 480 pixels
Image Modes	IR Image, Visual Image, Pic-in-Pic, Auto Fusion
Colour Pallets	Iron, Rainbow, Grey, Grey Inverted, Brown, Blue/Red, Feather, Zone Alarm
Measurements	
Object Temperature Range	-20 to 150°C (-4 to 302°F) / 0 to 650°C (32 to 1202°F)
Object Temperature Accuracy	±2°C (3.6°F) or ±2% of reading
Measurement Analysis	
Spot	Centre Spot & 3 Manual Spots
Automatic	Auto Hot & Cold Markers
	2 Line Analysis
	3 Area Analysis
Adjustable Emissivity	0.01 to 1.0
Measurement Correction	Emissivity, Reflected Temperature
Storage	
Storage Media	8GB Micro SD Card, 3.4GB Internal EMMC
Video Storage Mode	Standard MPEG-4
Image Storage Mode	Bitmap (.bmp) and simultaneous visual image including measurement data
Data Communication Interfaces	
USB Type	C, Data and Live Video transfer to PC
WiFi	802.11 Data and Live Video transfer to App
Size	224 x 77 x 96mm
Weight	500g



MTi15 | **160 x 120 Pixels with Wi-Fi**

**Contact Us
South Africa**

www.major-tech.com sales@major-tech.com

Australia

www.major-tech.com.au info@major-tech.com.au